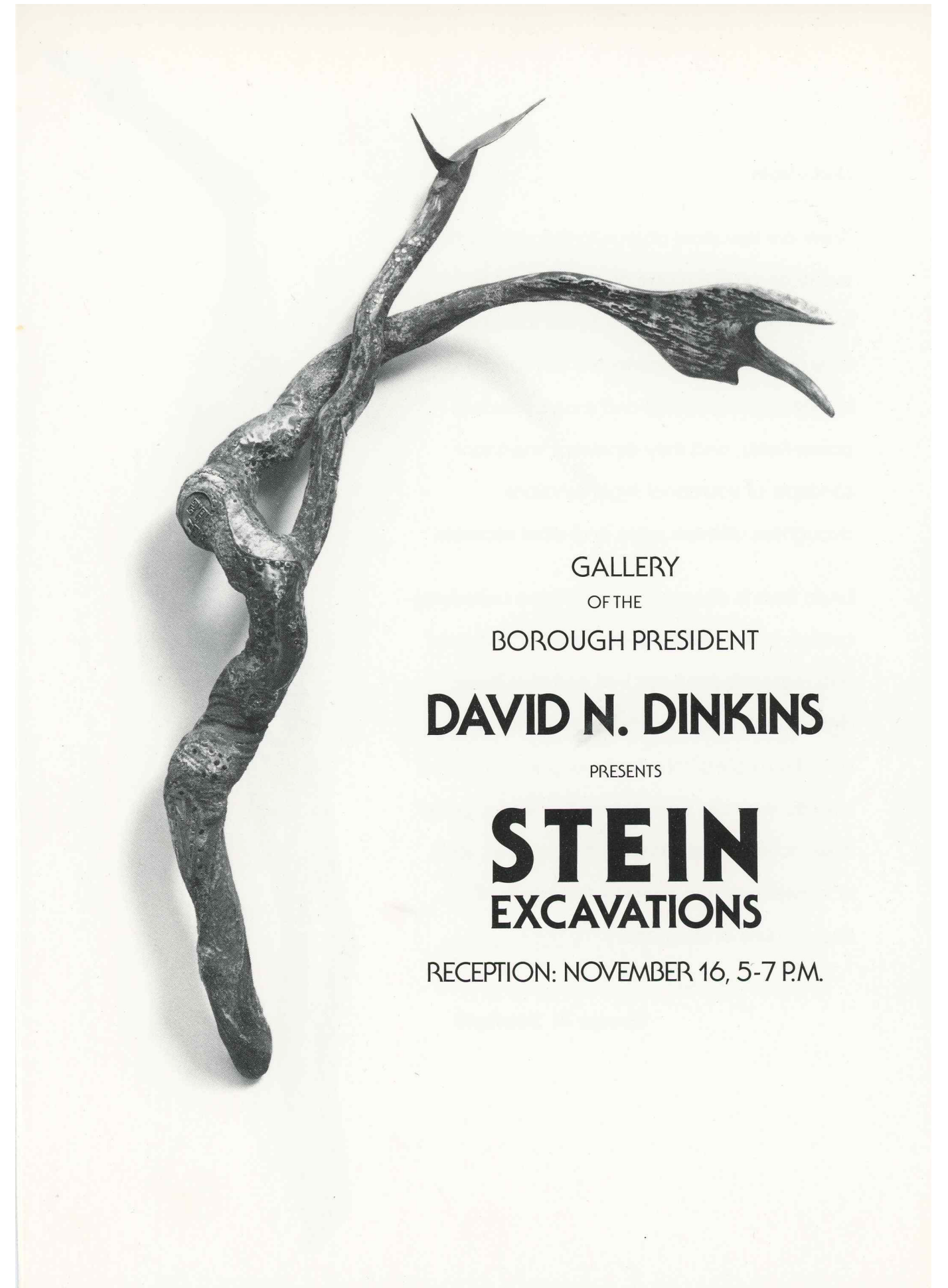




Linda Stein with Mayor David N. Dinkins, 1989



Linda Stein

There are few ritual objects in the world which evoke as wide a range of associations in human beings as Scepters. In our fantasies they are intimately connected with ancient kingdoms, with feudal and magic personal power-fields, and they represent important concepts of traditional regal functions throughout different ages and tribal societies.

Linda Stein is deeply aware of these underlying currents in her sculptural creations. The shapes and materials she fuses into primitive three-dimensional statements are alive with what C. G. Jung called "inherited group subconscious." Visually, they are stark, impressive works, pared down to essential forms related to trees, roots or bones, and ennobled by the hands of distant rulers or shamans.

George W. Staempfli



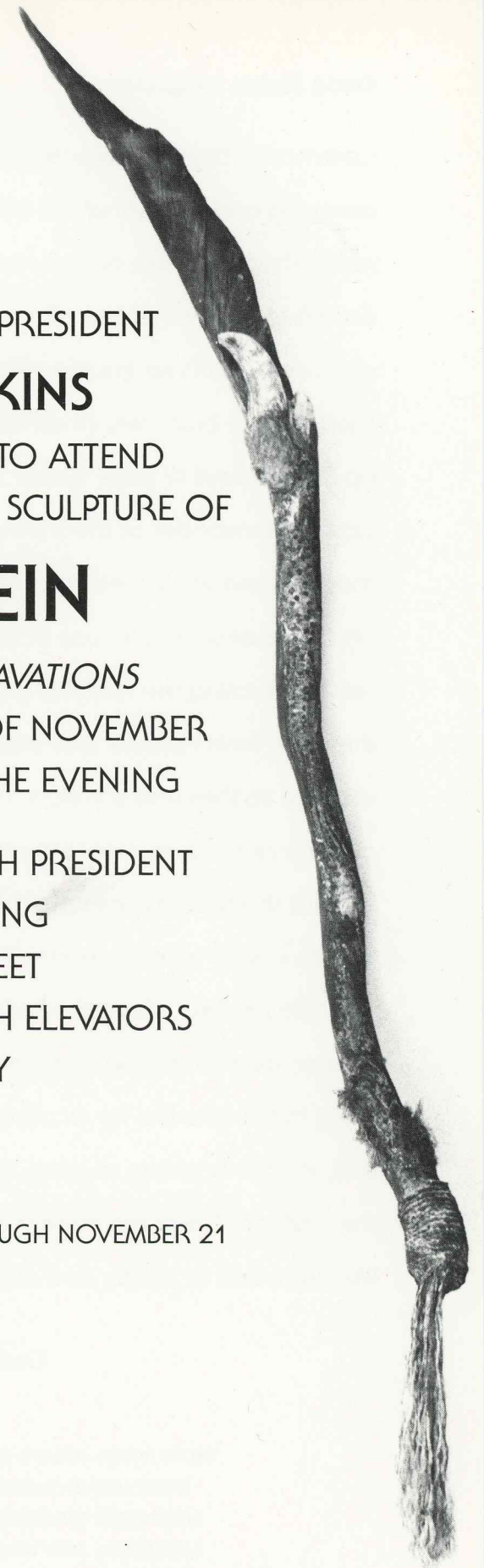
MANHATTAN BOROUGH PRESIDENT
DAVID N. DINKINS
CORDIALLY INVITES YOU TO ATTEND
A RECEPTION FEATURING THE SCULPTURE OF

LINDA STEIN

FROM HER SERIES: *EXCAVATIONS*
THURSDAY, THE SIXTEENTH OF NOVEMBER
FROM FIVE TO SEVEN IN THE EVENING

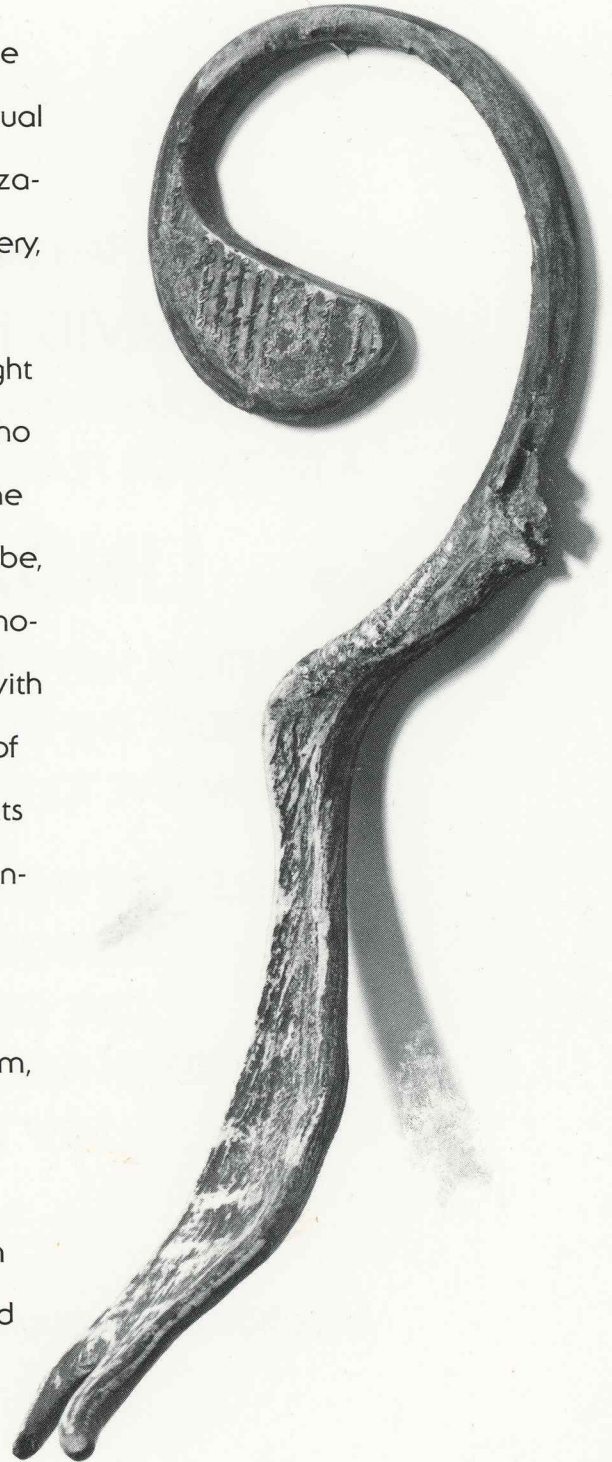
GALLERY OF THE BOROUGH PRESIDENT
MUNICIPAL BUILDING
ONE CENTRE STREET
NINETEENTH FLOOR, SOUTH ELEVATORS
NEW YORK CITY

EXHIBITION DATES: NOVEMBER 1 THROUGH NOVEMBER 21



Linda Stein's Sculptures

Ceremonial objects, objects that speak of the meaning and mystery of life, objects for spiritual rather than daily use are any and every civilization's first art. Art is above all founded in mystery, and Linda Stein's sculptures which speak of tools, of tree branches, of curving forms caught up in the round of time, speak to all of us who stare up in wonder at the shining cycles of the moon. These works belong to an invented tribe, and were designed for use in religious ceremonies celebrating the need to live in rhythm with the land. Stein's pieces that echo the forms of tools, of scythes and scimitars, are instruments of bone and stone, pieces made to be extensions of the hand suggesting the rhythm of bodies in step with the earth. Linda Stein's atavistic scepters, decorated with magnesium, copper, aluminum and brass, are made for ruling in the afterlife, for recalling the dead and, in their opening, curving, twistings from the wall, are full of the energy of growth and life, are works of poetry and regeneration.



Corinne Robins

FRONT COVER: *DUALITY*; 42 x 23 x 16 INCHES; WOOD, BONE, METAL

INSIDE LEFT: *SEA LADDER*; 65 x 15 x 11 INCHES; WOOD, BONE, METAL, STONE

INSIDE RIGHT: *THROWING STICK*; 62 x 13 x 11 INCHES; WOOD, BONE, METAL, STONE, ROPE

BACK COVER: *BODY STAFF*; 38 x 13 x 18 INCHES; WOOD, BONE, METAL, STONE